

# Local Community Planning in Perth & Kinross

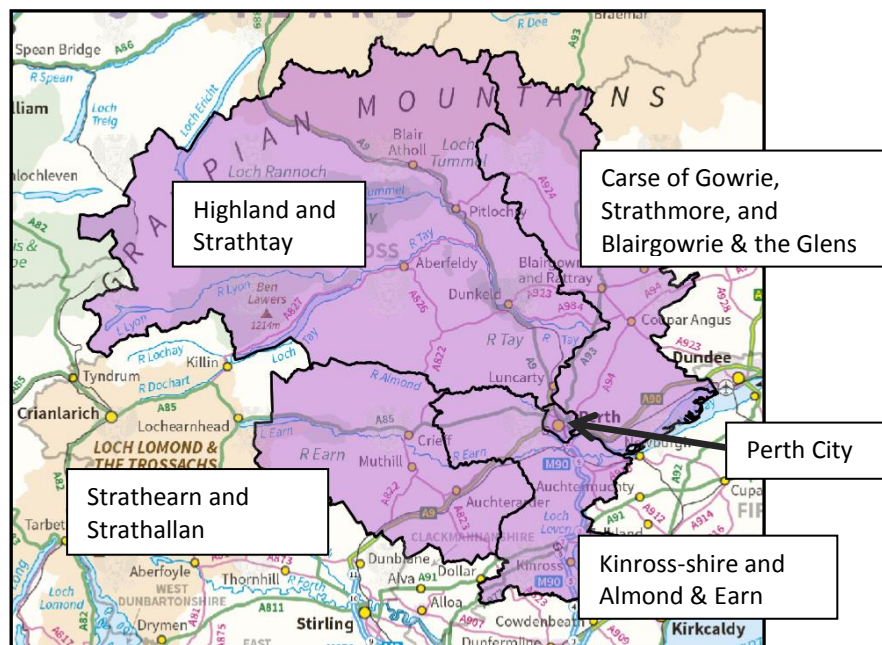
***Would you like to shape how local people and organisations can help direct action and resources in their communities to address local priorities?***

Five Local Community Planning Partnerships are being developed to bring together local community organisations and public service organisations with a shared focus on important local priorities including:

- education and learning
- health and wellbeing
- community justice and safety
- local environment
- economy

Community Planning brings together the collective talents and resources of local services and communities to drive positive change. The voices of communities themselves are integral to its success and we need your help to make that happen.

The new Partnerships will cover: Highland and Strathtay; Perth City, Eastern Perthshire; Strathearn and Strathallan; and Kinross-shire, Almond and Earn.



**To hear more and help shape how local people can be involved in these developments, register today for an Engagement Event in your area.**

These events are for anyone involved in their local community and for local residents more generally. The session will last about 2 hours. Light refreshments will be available.

Date	Venue	Time
Thursday 19 <sup>th</sup> May	North Inch Community Campus, Perth	6.30pm – 8.30pm
Monday 23 <sup>rd</sup> May	Blairgowrie Community Campus	6.30pm – 8.30pm
Tuesday 24 <sup>th</sup> May	Loch Leven Community Campus, Kinross	6.30pm – 8.30pm
Wednesday 25 <sup>th</sup> May	Breadalbane Community Campus, Aberfeldy	6.30pm – 8.30pm
Thursday 26 <sup>th</sup> May	Strathearn Community Campus, Crieff	6.30pm – 8.30pm

**Please register your attendance by emailing [laura.stasyte@pkavs.org.uk](mailto:laura.stasyte@pkavs.org.uk) or call 01738 567076.**

**If you are unable to attend or would like to give your views and ideas in another way, please contact us using the details above.**